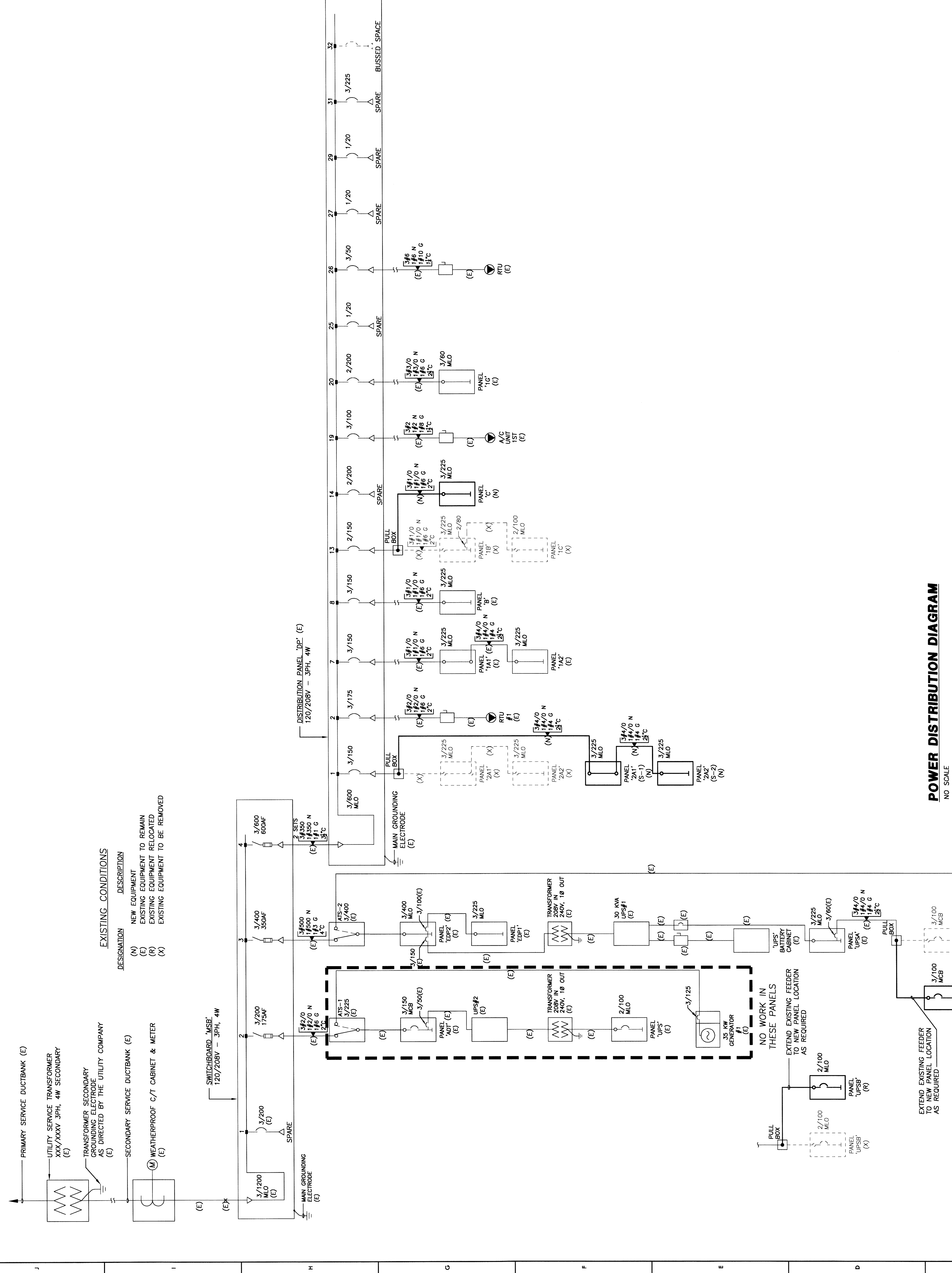


MARK	DESCRIPTION / SERVING	VOLT	PH	LOAD	PROVISIONS		NOTES
					FUSE	FUSES	
MECHANICAL EQUIPMENT CONNECTION SCHEDULE							
ROOF TOP UNITS							
208	2ND FLOOR SOUTH WEST	3	51	MCA	FSS	60	51 T'STAT
208	2ND FLOOR SOUTH WEST	3	31	MCA	FSS	60	31 T'STAT
208	2ND FLOOR SOUTH WEST	3	44	MCA	FSS	60	44 T'STAT
208	2ND FLOOR SOUTH WEST	3	23	MCA	FSS	60	23 T'STAT
GAS FIRED FURNACE (ALTERNATE #3)							
120		1			NFSS		T'STAT
208		3	34.5	MCA	FSS	60	60 T'STAT
120		1			NFSS		T'STAT
208		3	34.5	MCA	FSS	60	60 T'STAT
ELECTRIC HEATER							
208	GARAGE	3	10.0	KW	FSS	60	40 T'STAT
208	GARAGE	3	10.0	KW	FSS	60	40 T'STAT
208	GENERATOR RM.	3	7.5	KW	FSS	30	30 T'STAT
EXHAUST FANS							
115	WOMEN'S TOILET	1	1.35	W	TMS		CONTINUOUS
115	MEN'S TOILET	1	83	W	TMS		CONTINUOUS
115	GARAGE	1	1/30	HP	NFSS		CONTINUOUS
DUCTLESS SPLIT SYSTEM							
	INDOOR			1.0 MCA	NFSS		NOTE 3
	OUTDOOR	208		13.0 MCA	FSS	30	T'STAT
	INDOOR			1.0 MCA	NFSS		NOTE 3
	OUTDOOR	208		13.0 MCA	FSS	30	T'STAT
	INDOOR			2.0 MCA	NFSS		NOTE 3
	OUTDOOR	208		25.0 MCA	FSS	60	T'STAT
	INDOOR			2.0 MCA	NFSS		NOTE 3
	OUTDOOR	208		25.0 MCA	FSS	60	T'STAT
	INDOOR			1.0 MCA	NFSS		NOTE 3
	OUTDOOR	208		13.0 MCA	FSS	30	T'STAT

NOTES:
 1. EQUIPMENT INDICATED ABOVE IS FURNISHED & INSTALLED UNDER ANOTHER DIVISION OF THE WORK. DIVISION 16 TO MAKE ELECTRICAL PROVISIONS AS INDICATED.
 2. ALL EXTERIOR SWITCHES AND SAFETY SWITCHES TO BE NEMA 3R TYPE.
 3. FSS = (INDOOR UNIT) IS PROVIDED FROM OHS-4 (OUTDOOR UNIT). VERIFY VOLTAGE, PHASE, CONTROLS AND OTHER REQUIREMENTS WITH UNIT SUPPLIER PRIOR TO WORK.
 EQUIPMENT MARK: EQUIPMENT TYPE: EQUIPMENT NUMBER:
 FSS - FUSED SAFETY SWITCH
 NFSS - NON FUSED SAFETY SWITCH
 TMS - THERMAL MANUAL MOTOR STARTER
 MLO - MANUAL MOTOR LOCKOUT
 A/C - AUTOMATIC TEMPERATURE CONTROL (DIVISION 15)



POWER DISTRIBUTION DIAGRAM
 NO SCALE

NOTES:
 1. EQUIPMENT IMMEDIATELY DOWN STREAM OF FAULT CURRENT A.I.C. RATING DESIGNATION SHALL BE BRACED FOR THE RATING INDICATED. BRANCH MAINS SHALL BE U.L. SERIES RATED OR CURRENT LIMITING TYPE FUSES TO REDUCE DOWN STREAM FAULT CURRENT TO A.I.C. RATING. CONTRACTOR TO CONFIRM WITH UTILITY COMPANY THE FAULT CURRENT RATINGS, PRIOR TO RELEASE OF EQUIPMENT.